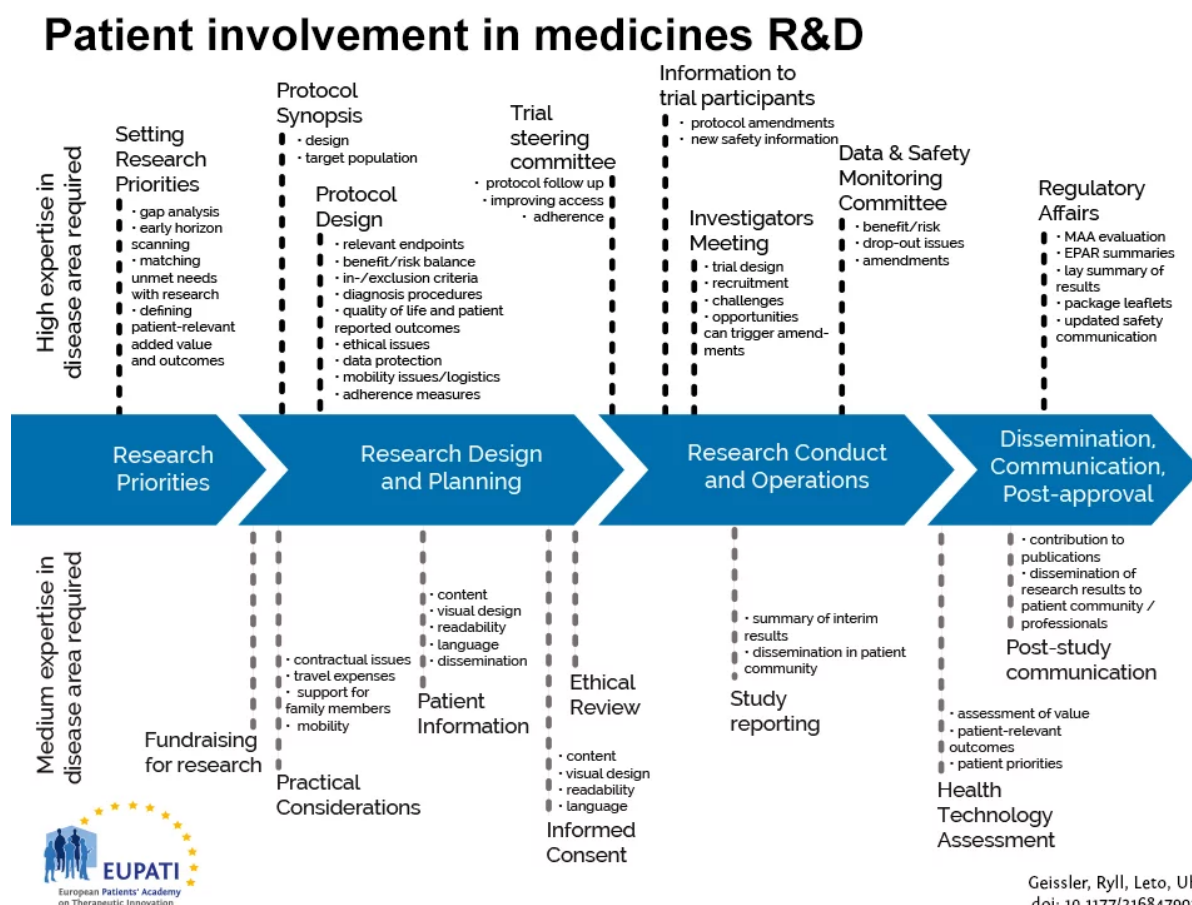


Mini-course starter kit – Setting Research Priorities

Introduction

This EUPATI Mini-course starter kit is designed for patient involvement in setting research priorities.

EUPATI Mini-course starter kits have been derived from content found in the EUPATI toolbox and EUPATI Patient Expert Training Course. The starter kits are thought to address roles that patients play in medicines development for example those shown in the figure below.



Patients can be involved across the process of medicines R&D. This diagram created by Geissler, Ryll, Leto, and Uhlenhopp identifies some existing areas in which

patients are involved in the process. It distinguishes between the level of expertise in a disease area that is required and the different areas where involvement can take place.

Patients can be involved across the process of medicines R&D. This diagram created by Geissler, Ryll, Leto, and Uhlenhopp identifies some existing areas in which patients are involved in the process. It distinguishes between the level of expertise in a disease area that is required and the different areas where involvement can take place.

The starter kits provide you with links to relevant background reading in the toolbox and associated PowerPoint slide decks and media in order to prepare a single or multi-day training on the subject. Each of the starter kits contains a selection of PPT slides which you may use to educate patients/advocates about the “basics” in that area, e.g. in a two-hour to one-day seminar.

The starter kits are based on existing content from the EUPATI Toolbox, plus additional links to add-on Toolbox material. None of the “starter kits” are “ready-made course” modules – they are a ready-to-reuse resource for an experienced trainer to prepare and execute a course. You will need to edit them and put them into context.

Before you begin please download and review the ‘Manual for Trainers’.

- **Presentation: Manual for Trainers**

Size: 722,143 bytes, Format: .pptx

A manual for trainers describing how to use the EUPATI mini-course starter kits to create trainings on patient involvement.

Setting Research Priorities

This starter kit provides background reading, slides, a video, and quizzes to create training for patients who intend to become involved in setting research priorities.

[glossary_exclude]

Core reading

Discovery and development of medicines

Making a medicine. Step 1: Pre-discovery

Making a medicine. Step 2: Target selection

Making a medicine. Step 3 and 4: Choosing a molecule or lead

Making a medicine. Step 5: Non-clinical safety testing

Making a medicine. Step 6: Phase I – Proof of mechanism

Making a medicine. Step 7: Phase II – Proof of concept

Making a medicine. Step 8: Confirmatory studies

Making a medicine. Step 9: Regulatory submission

Making a medicine. Step 10: Life-cycle management

New research areas in personalised medicines

Introduction to clinical research

Challenges in personalised medicine

The power of the patient voice in research

Off-label use

Presentations

- **Discovery-and-Development-of-Medicines-v1_EN**

Size: 862,301 bytes, Format: .pptx

A presentation describing the discovery and development of medicines, which can be adapted for own use.

- **Presentation: The basic principles of medicine discovery and development**

Size: 918,164 bytes, Format: .pptx

The basic principles of medicine discovery and development. It takes over 12 years and over €1 billion to do all the research and development necessary before a new medicine is available for patients to use. This presentation details the process from discovery to release of a new medicine onto the market and beyond.

- **Challenges-in-Personalised-Medicine-v1_EN**

Size: 396,441 bytes, Format: .pptx

A presentation describing the challenges in personalised medicine, which can be adapted for own use.

- **Off-label-use-v1_EN**

Size: 393,601 bytes, Format: .pptx

A presentation describing the off-label use of medicine, which can be adapted for own use.

Additional Learning Resources

Are you ready to elevate your expertise with certifications in areas like Clinical Development, Medicine Discovery, and HTA Evaluation?

Explore the links below to access the EUPATI Open Classroom, choose the courses that match your interests, and embark on your learning adventure today!

- Learn more about the Steps of Making a Medicine!
- Curious about the 'off-label use' of Medicines? Find out more!
- Explore Emerging Research Frontiers and Challenges in Personalised Medicine!

[/glossary_exclude]

Videos

An introduction to clinical research [ECRAN] can be downloaded from EUPATI on Youtube.

Explore the history of clinical trials stemming back to 1747 and learn more about how they work today in this short video from the ECRAN project.

“Clinical Research” by ECRAN Project is licensed under CC BY-NC-SA 4.0

Terms of use - Creative Commons

Remember that all educational content provided by EUPATI is released under a Creative Commons License, which also applies to all derivatives of it! You can read more about the use of EUPATI content on the Creative Commons page.

Use of the EUPATI logo

The EUPATI logo is protected by trademark and owned by the European Patients Forum.

Except for the limited purpose of indicating that work is created or licensed by EUPATI (European Patients Academy for Therapeutic Innovation), or collaboration with EUPATI, the European Patients Forum (EPF) does not authorise the use, by any party, of the trademark "EUPATI" or any related trademark or logo of EUPATI without the prior written consent of EPF. Any permitted use will be in compliance with EUPATI's then-current trademark usage guidelines, as may be published on its website or otherwise made available upon request from time to time.

A2-SK-research-priorities-V1.0