

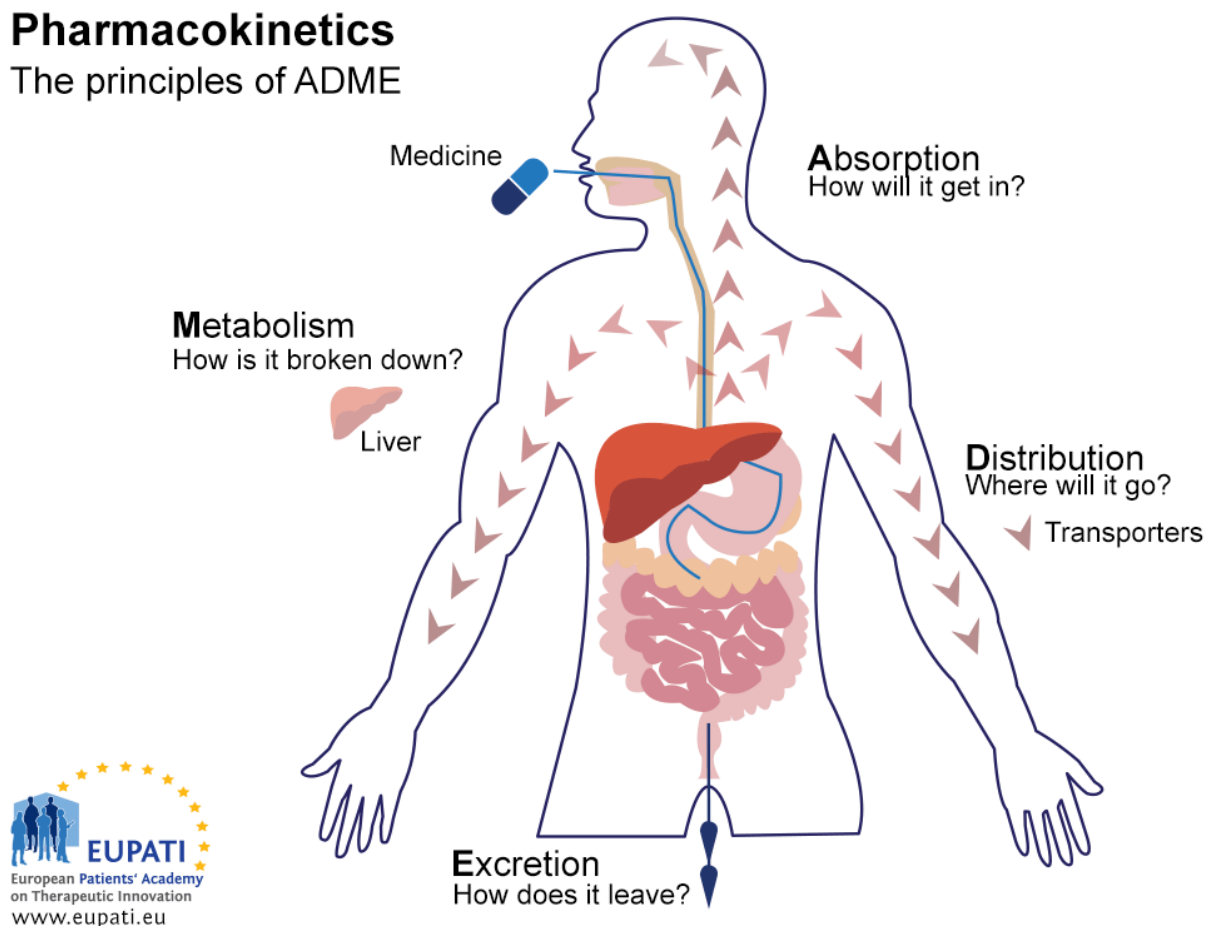
Pharmacokinetics [PK]

Pharmacokinetics is the study of what the body does to medicine. It studies the absorption, distribution, metabolism, and excretion of the medicine (ADME), as well as bioavailability.

These pharmacokinetic processes, often referred to as ADME, determine concentration of the medicine in the body, and the onset, duration, and intensity of a medicine's effect.

Pharmacokinetics

The principles of ADME



The key principles of Pharmacokinetics – the study of the effect the body has on a medicine – are represented in the acronym ADME.